

## Operating Instructions and spare parts list

DOK-056-GB Rev. 1

designation pressure regulating valves with pneumatic control

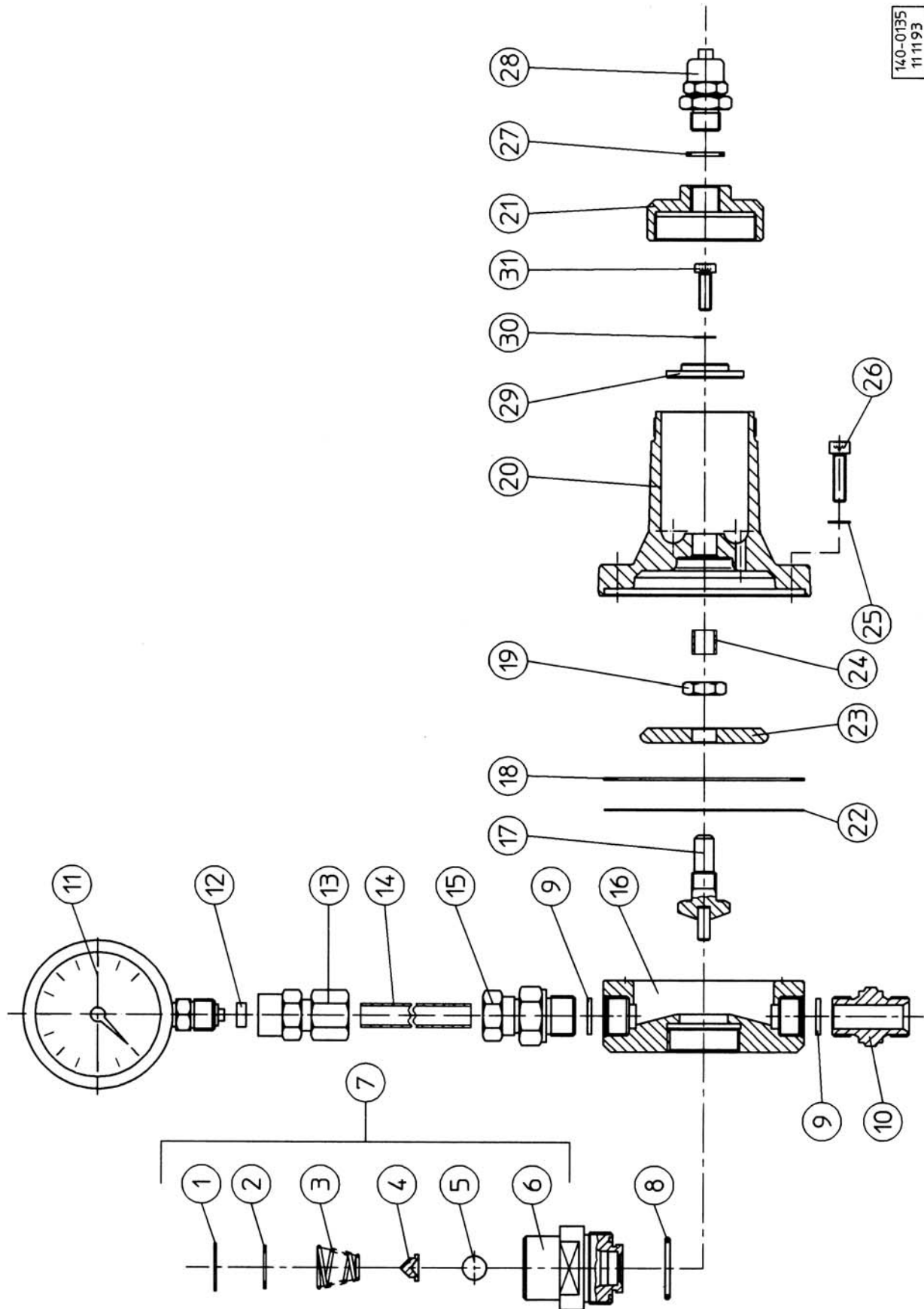
type stainless steel, 10bar

**Artikel-Nr.: 6986-000**

- keep for future use -

CE

**Krautzberger** 



Item	Designation	Order-No.
1	Lock Ring	030-1896
2	Washer	030-1878
3	Spring	020-0083
4	Spring plate	040-0542
5	Ball	030-1904
6	Valve housing	080-0089
7	Regulating valve	080-0025
8	Gasket	010-0404
9	Gasket (2pcs)	010-0665
10	Double nipple	040-0061
11	Pressure gauge 0-16bar	030-1040
12	Gasket	010-0301
13	Screw connection	030-3045
14	Pipe	040-0548
15	Screw connection	030-0086
16	Housing	040-0584
17	Stud, tungsten carbid	080-1409
	Stud, stainless-steel	080-1667
18	Diaphragm	010-0445
19	Nut	030-2920
20	Cover	040-0585
21	End cap	040-0583
22	Diaphragm	010-0444
23	Diaphragm disk	040-0543
24	Socket	030-0036
25	Washer (6pcs)	030-0707
26	Screw (6pcs)	030-0154
27	Gasket	010-0187
28	Screw connection	040-0820
29	Washer	040-0125
30	Washer	030-0707
31	screw	030-0245

**Krautzberger material pressure regulating valves are designed to maintain a defined material pressure within a piping system or at tapping points.**

**The material used make the valve suitable for use with nearly all paints, varnishes (in particular water varnishes), staining agents, adhesives and food-stuff products.**

**The valve should be mounted horizontally and the pressure gauge should always point upwards. Thanks to the internal design of the housing, this ensures that cleaning is carried out with maximum efficiency.**

#### ■ Diaphragm change

Clean the regulating valve using a suitable solvent. Relieve the system on the working and control pressure sides. Disconnect the control pressure line from the screw connection (28) Unscrew the screws (26) and remove the cover (20). Unscrew the end cap (21) from the cover (20), unscrew the

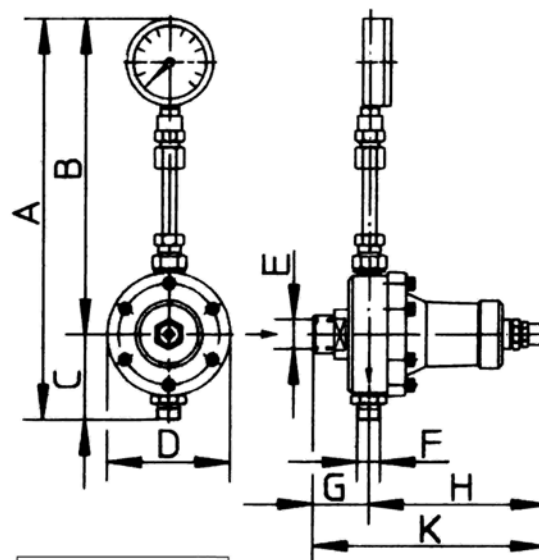
screw (31), and remove the washers (29+30).

Remove the stud (17) from the cover (20) together with the diaphragms (18+22), the diaphragm disk (23) and the nut (19). Unscrew the nut (19) from the stud (17), replace the diaphragm disk (23) and the defective diaphragms (18+22)

Reassemble in the reverse order.

#### Technical Data

Material-carrying parts	Stainless steel
Diaphragm	PTFE/rubber
Valve seat	Tungsten carbide
Valve ball	Tungsten carbide
Operating temperature	Max. +80°C
Material input pressure	Max. 50bar
Pressure range	0-10bar
Weight	Approx. 2,5kg



A	= 285,0 mm
B	= 224,5 mm
C	= 60,5 mm
D	= 88,0 mm
E	= G 1/2"
F	= G 3/8"
G	= 40,0 mm
H	= 127,0 mm
K	= 167,0 mm