

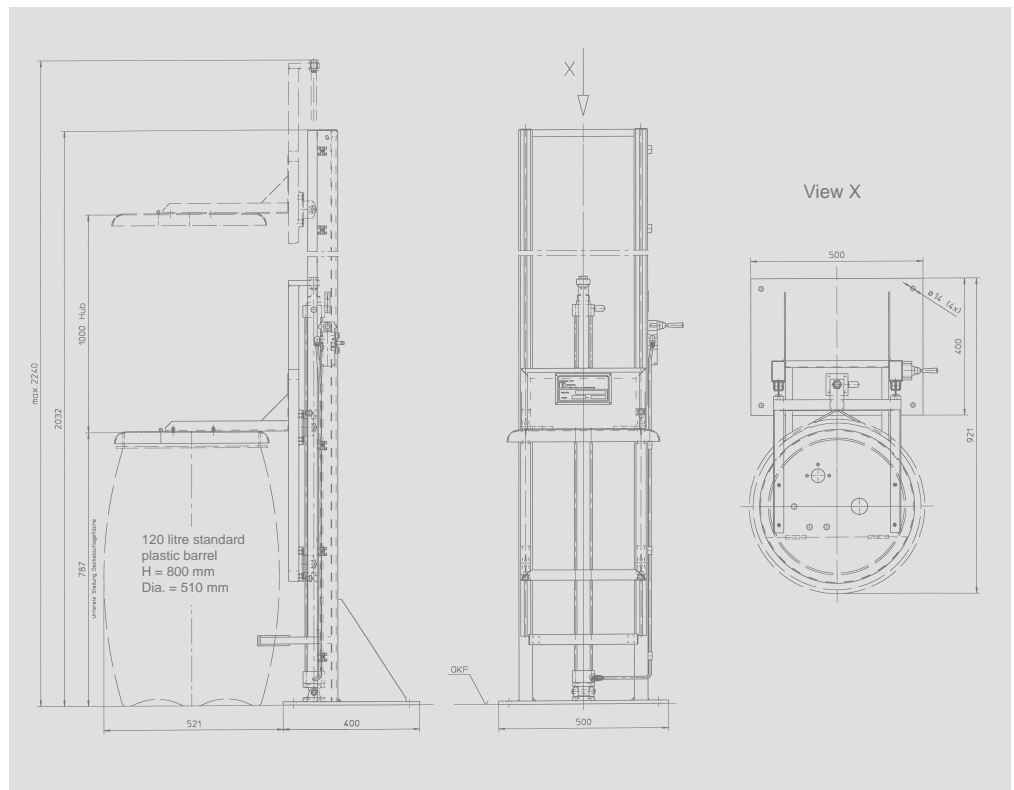




Pump lifting devices stationary

Krautzberger's stationary pump lifting devices are pneumatically driven. The units are suitable for holding Krautzberger diaphragm pumps, stirrers and filling level monitoring devices.

The lifting devices are available with different stroke heights and cover diameters and suitable for all standard container/drum sizes. The stationary pump lifting devices need to be anchored in the floor (exception: 030-4313).



Lifting devices, stationary

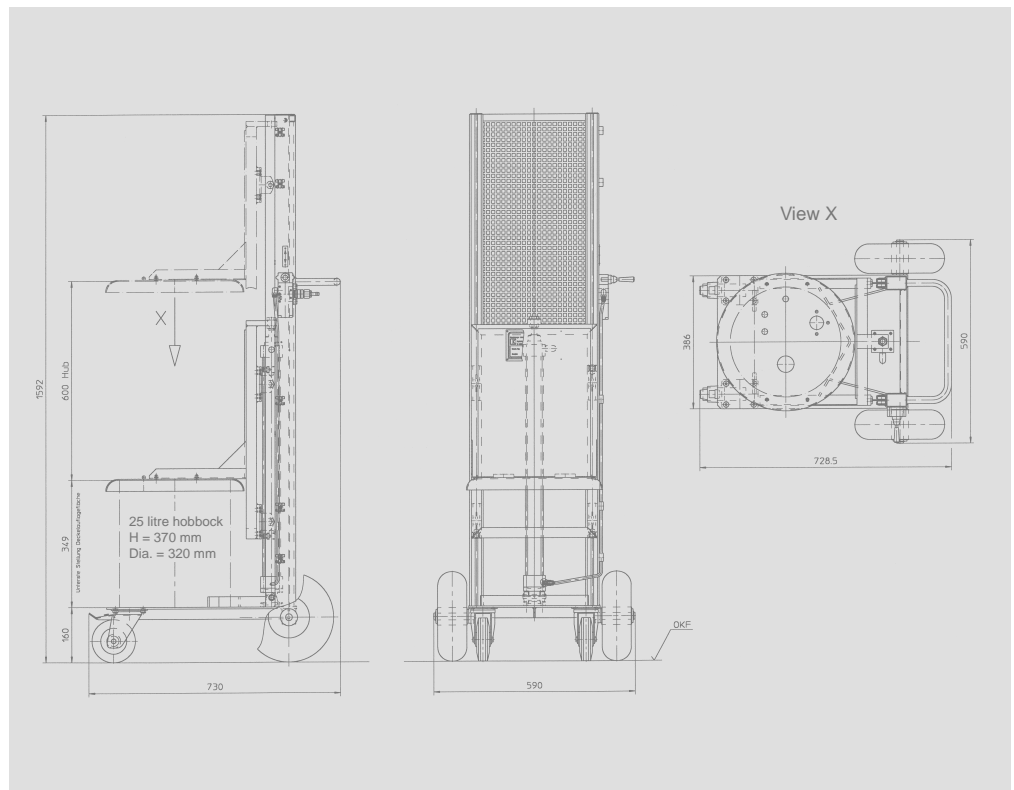
Cover dia. mm	650	450	400	400
Width, mm	650	500	500	940
Height, mm	2640	2230	1435	1100
Depth, mm	1050	930	800	570
Stroke (approx.), mm	1200	1000	600	600
Effective load (max.), kp	50	50	50	50
Required compressed air connection, bar	6-10	6-10	6-10	6-10
Article no.	090-1603	090-1602	090-1600	030-4313



Pump lifting devices moveable

Krautzberger's moveable pump lifting devices are pneumatically driven. The units are suitable for holding Krautzberger diaphragm pumps, stirrers and filling level monitoring devices.

The lifting devices are fitted with two steerable and two rigid wheels and therefore permit highly flexible use in companies.



Lifting devices, moveable

Cover dia. mm	400
Width, mm	580
Height, mm	1590
Depth, mm	700
Stroke (approx.), mm	600
Effective load (max.), kp	50
Required compressed air connection, bar	6-10
Article no.	090-1601